

6"

140 SX64

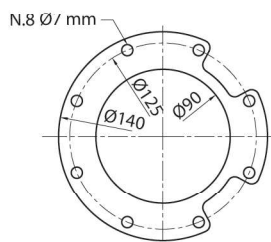
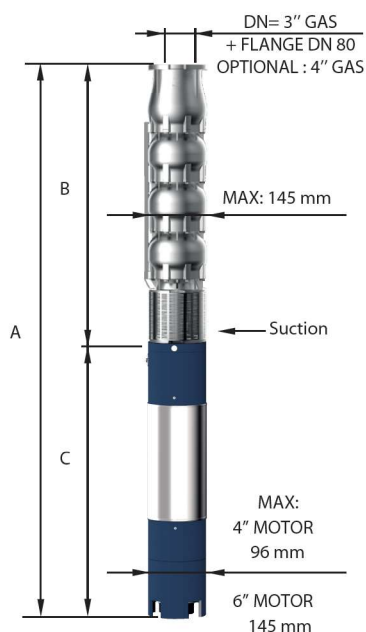


CARATTERISTICHE IDRAULICHE - HYDRAULIC PERFORMANCES

Q= Portata - Capacity - Debit 50 Hz n= 2900 min

Tipo Type	Power		H(m)	0	700	800	900	1000	1100	1200	1300	1400	1500			
	kW	HP		l/min	l/sec	m ³ /h	0	11,67	13,33	15	16,67	18,33	20	21,67	23,33	25
				0	42	48	54	60	66	72	78	84	90			
140 SX 64/01	2,20	3	13	10	9,9	9,6	9,3	9	8,6	8	7	6				
140 SX 64/02	4	5,5	26	21	20	19,5	19	18	17	15	13	11				
140 SX 64/03	7,50	10	39	31	30	29	28	27	26	23	20	17				
140 SX 64/04	9,20	12,5	52	41	40	38	37	36	34	31	27	23				
140 SX 64/05	11	15	66	52	50	48	47	45	43	38	33	28				
140 SX 64/06	13	17,5	79	62	59	57	56	55	51	46	40	34				
140 SX 64/07	15	20	92	73	69	67	66	64	60	53	46	39				
140 SX 64/08	18,50	25	105	83	79	76	75	73	68	61	53	45				
140 SX 64/09	22	30	118	93	89	86	84	82	77	69	60	51				
140 SX 64/10	22	30	131	104	99	95	94	91	85	76	66	56				
140 SX 64/11	26	35	144	114	109	105	103	100	94	84	73	62				
140 SX 64/12	26	35	157	124	119	114	112	109	102	92	80	68				
140 SX 64/13	30	40	170	135	129	124	122	118	111	99	86	73				
140 SX 64/14	30	40	183	145	139	134	131	127	120	107	93	79				
140 SX 64/15	37	50	197	155	149	143	140	136	128	114	99	84				
140 SX 64/16	37	50	210	166	158	153	150	145	137	122	106	90				
140 SX 64/17	37	50	223	176	168	162	159	155	145	130	113	96				
140 SX 64/18	37	50	236	186	178	172	168	164	154	137	119	101				

DIMENSIONI D'INGOMBRO E PESI - OVERALL DIMENSIONS AND WEIGHTS



FOR COMMERCIAL TUBE
EXTERNAL DIAMETER: 88,9 mm

Type	A mm Tri V 400	B mm	C mm Tri	M Kg Tri	P Kg
140 SX 64/01	853	400	452	15	12
140 SX 64/02	1104	507	597	22	15
140 SX 64/03	1432	614	818	32	19
140 SX 64/04	1472	721	751	60	23
140 SX 64/05	1639	828	811	65	27
140 SX 64/06	1776	935	841	70	32
140 SX 64/07	1973	1042	931	75	36
140 SX 64/08	2140	1149	991	83	40
140 SX 64/09	2327	1256	1071	92	44
140 SX 64/10	2434	1363	1071	92	48
140 SX 64/11	2651	1470	1181	100	53
140 SX 64/12	2758	1577	1181	100	57
140 SX 64/13	2935	1684	1251	108	61
140 SX 64/14	3042	1791	1251	108	65
140 SX 64/15	3239	1898	1341	118	70
140 SX 64/16	3346	2005	1341	118	75
140 SX 64/17	3453	2112	1341	118	80
140 SX 64/18	3560	2219	1341	118	85

n% = Rendimento della pompa
n% = Rendement de la pompe
n% = Pump efficiency
n% = Rendimiento de la bomba

**Max
76%**

kW/st = Assorbimento per stadio
kW/st = Absorption par étage
kW/st = Stage absorption
kW/st = Potencia absorbida por etapa

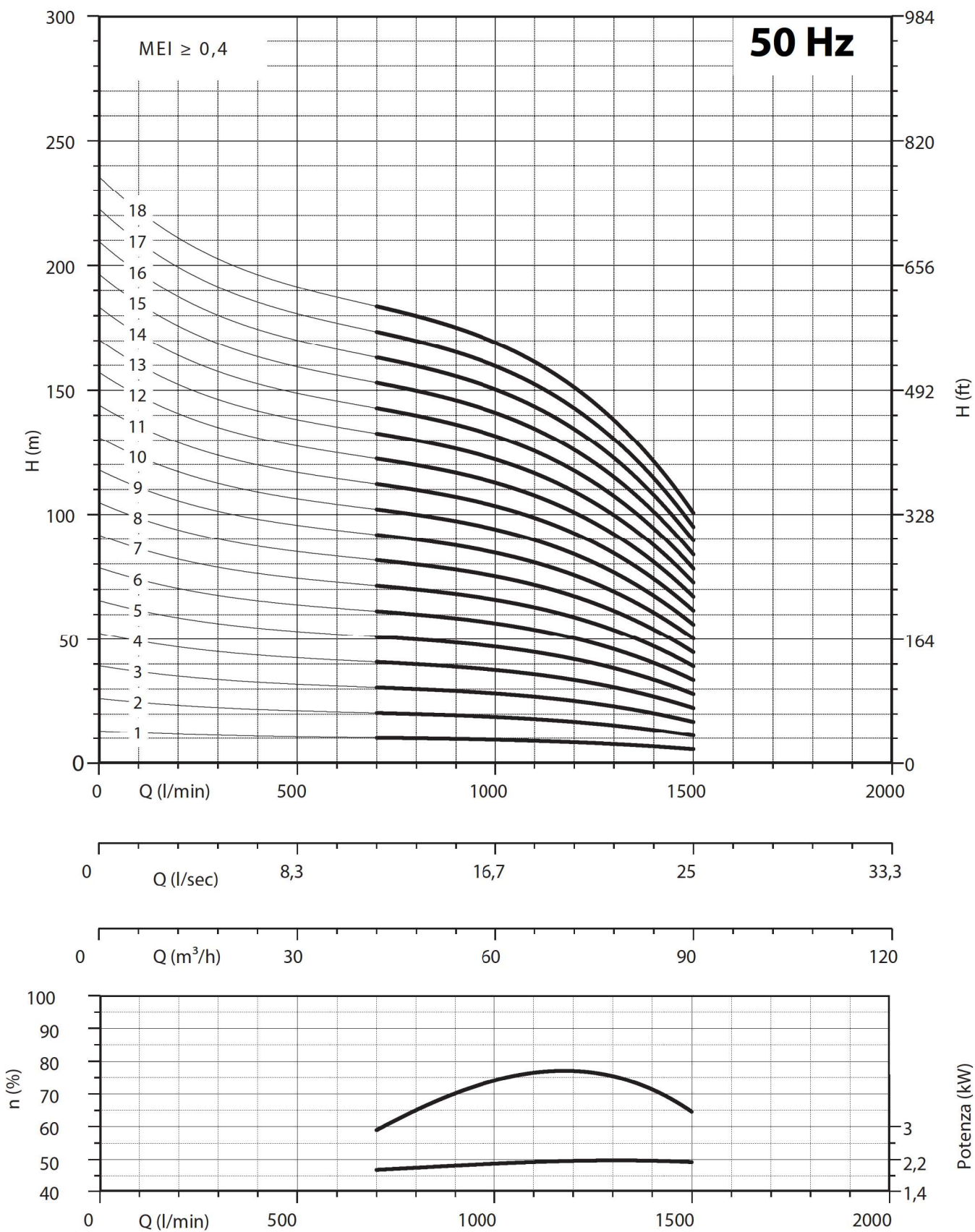
**Max
2,18**

Tolleranza alla sabbia 50 g/m³ - Sand tolerance 50 g/m³ - Compatibilità con acqua potabile DM 174 Drinking water compatibility according to DM 174
Tolleranze secondo UNI ISO 9906 livello 3B - Tolerances according to UNI ISO 9906 grade 3B



6"

140 SX64



NPSH (m)	25%	50%	75%	100%
140 SX 64	3,8	3,8	5,1	7,1