

# 8"

## 180 SX90



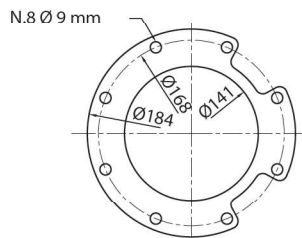
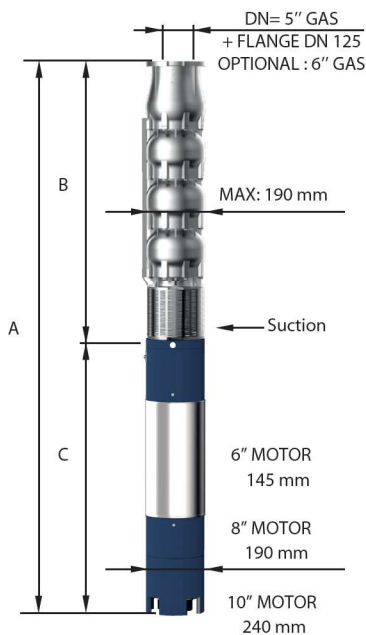
### CARATTERISTICHE IDRAULICHE - HYDRAULIC PERFORMANCES

Q= Portata - Capacity - Debit **50 Hz n= 2900 min**

Tipo Type	Power		H(m)	0	800	1000	1200	1400	1600	1800	2000	
	kW	HP		l/min	l/sec	m <sup>3</sup> /h	l/min	l/sec	m <sup>3</sup> /h	l/min	l/sec	m <sup>3</sup> /h
				0	13,33	16,67	20	23,33	26,67	30	33,33	
180 SX 90/01	7,50	10	27	24	23	22	20	18	16	13		
180 SX 90/02	13	17,5	54	49	47	44	40	36	31	25		
180 SX 90/03	22	30	81	73	70	65	60	54	47	38		
180 SX 90/04	26	35	108	97	93	87	80	71	62	50		
180 SX 90/05	37	50	135	121	116	109	101	89	78	63		
180 SX 90/06	44	60	162	146	140	131	121	107	93	76		
180 SX 90/07	44	60	189	170	163	152	141	125	109	88		
180 SX 90/08	55	75	216	194	186	174	161	143	124	101		
180 SX 90/09	66	90	243	218	209	196	181	161	140	114		
180 SX 90/10	66	90	270	243	233	218	201	179	155	126		
180 SX 90/11	75	100	297	267	256	239	221	197	171	139		
180 SX 90/12	92	125	324	291	279	261	241	214	186	151		
180 SX 90/13	92	125	351	315	302	283	262	232	202	164		
180 SX 90/14	92	125	378	340	326	305	282	250	217	177		
180 SX 90/15	110	150	405	364	349	326	302	268	233	189		
180 SX 90/16	110	150	432	388	372	348	322	286	248	202		
180 SX 90/17	110	150	459	412	395	370	342	304	264	215		

### DIMENSIONI D'INGOMBRO E PESI - OVERALL DIMENSIONS AND WEIGHTS

Type	A mm Tri V 400	B mm	C mm Tri	M Kg Tri	P Kg
180 SX 90/01	1226	525	701	55	19
180 SX 90/02	1491	650	841	70	26
180 SX 90/03	1846	775	1071	92	32
180 SX 90/04	2081	900	1181	100	39
180 SX 90/05	2366	1025	1341	118	45
180 SX 90/06	2273	1150	1123	178	52
180 SX 90/07	2398	1275	1123	178	58
180 SX 90/08	2633	1400	1233	200	65
180 SX 90/09	2828	1525	1303	214	71
180 SX 90/10	2953	1650	1303	214	78
180 SX 90/11	3158	1775	1383	230	84
180 SX 90/12	3483	1900	1583	270	91
180 SX 90/13	3608	2025	1583	270	97
180 SX 90/14	3733	2150	1583	270	104
180 SX 90/15	4008	2275	1733	300	110
180 SX 90/16	4133	2400	1733	300	117
180 SX 90/17	4258	2525	1733	300	123



FOR COMMERCIAL TUBE  
EXTERNAL DIAMETER: 139,7 mm

n% = Rendimento della pompa  
n% = Rendement de la pompe  
n% = Pump efficiency  
n% = Rendimiento de la bomba

**Max 75%**

kW/st = Assorbimento per stadio  
kW/st = Absorption par étage  
kW/st = Stage absorption  
kW/st = Potencia absorbida por etapa

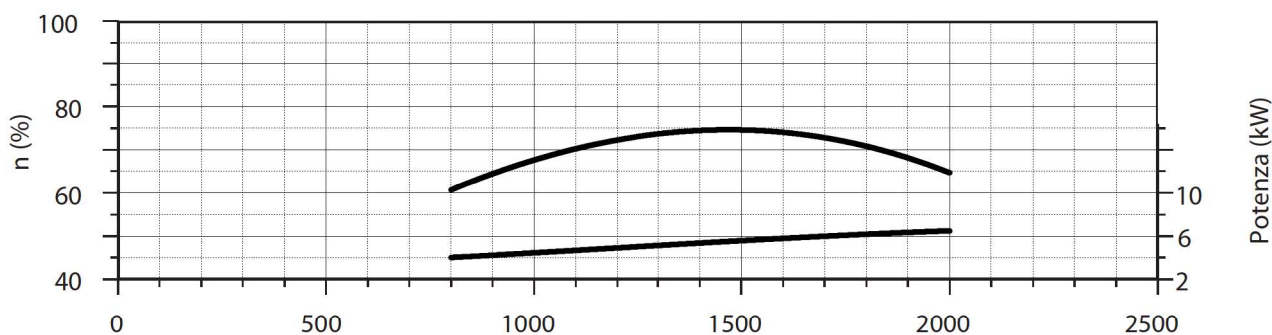
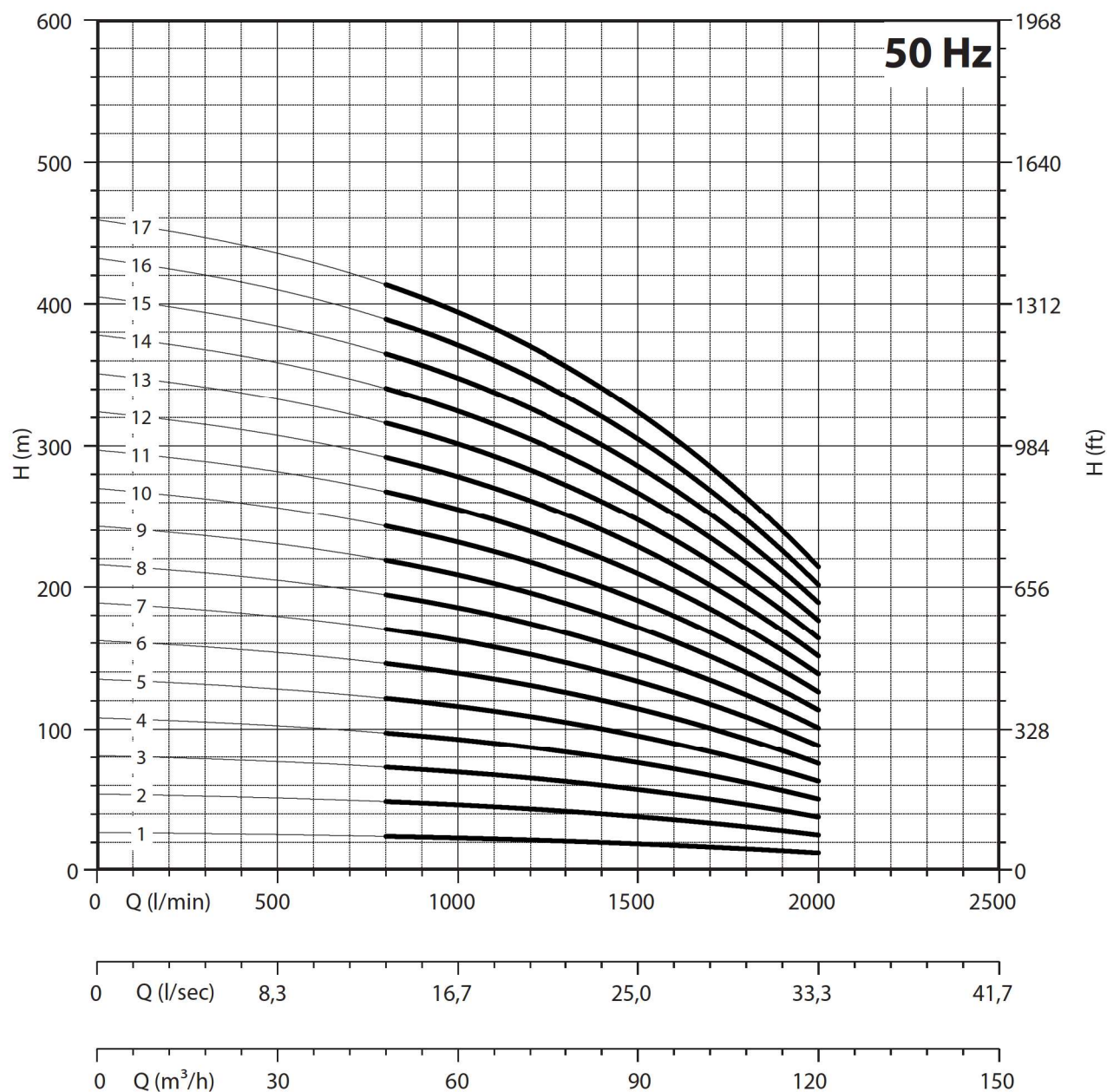
**Max 6,47**

Tolleranza alla sabbia 50 g/m<sup>3</sup> - Sand tolerance 50 g/m<sup>3</sup> - Compatibilità con acqua potabile DM 174 Drinking water compatibility according to DM 174  
Tolleranze secondo UNI ISO 9906 livello 3B - Tolerances according to UNI ISO 9906 grade 3B



# 8"

## 180 SX90



NPSH (m)	25%	50%	75%	100%
180 SX 90	2,5	2,9	3,9	7,8