

6"

140 SX34



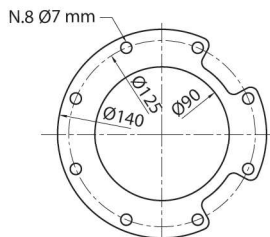
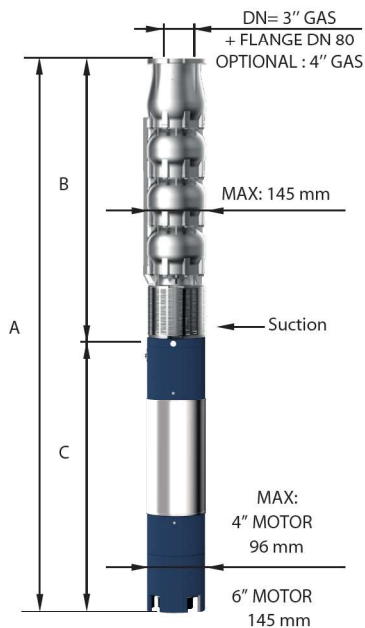
CARATTERISTICHE IDRAULICHE - HYDRAULIC PERFORMANCES

Q= Portata - Capacity - Debit **50 Hz n= 2900 min**

Tipo Type	Power		H(m)	0	300	400	500	600	700	800
	kW	HP		l/min	l/sec	l/sec	l/sec	l/sec	l/sec	l/sec
				m ³ /h	m ³ /h	m ³ /h	m ³ /h	m ³ /h	m ³ /h	
140 SX 34/03	4	5,5	43	0	38	36	34	31	26	20
140 SX 34/04	5,50	7,5	57	0	51	48	45	41	35	27
140 SX 34/05	7,50	10	72	0	64	60	57	51	44	34
140 SX 34/06	9,20	12,5	86	0	76	72	68	61	52	41
140 SX 34/07	9,20	12,5	100	0	89	84	79	71	61	48
140 SX 34/08	11	15	114	0	102	96	90	82	70	54
140 SX 34/09	13	17,5	129	0	114	108	102	92	78	61
140 SX 34/10	15	20	143	0	127	120	113	102	87	68
140 SX 34/11	15	20	157	0	140	132	124	112	96	75
140 SX 34/12	18,50	25	172	0	152	144	136	122	104	82
140 SX 34/13	18,50	25	186	0	165	156	147	133	113	88
140 SX 34/14	22	30	200	0	178	168	158	143	122	95

DIMENSIONI D'INGOMBRO E PESI - OVERALL DIMENSIONS AND WEIGHTS

Type	A mm Tri V 400	B mm	C mm Tri	M Kg Tri	P Kg
140 SX 34/03	1193	596	597	22	16
140 SX 34/04	1395	697	698	27	20
140 SX 34/05	1616	798	818	32	23
140 SX 34/06	1650	899	751	60	27
140 SX 34/07	1751	1000	751	60	30
140 SX 34/08	1912	1101	811	65	33
140 SX 34/09	2043	1202	841	70	37
140 SX 34/10	2234	1303	931	75	40
140 SX 34/11	2335	1404	931	75	44
140 SX 34/12	2496	1505	991	83	47
140 SX 34/13	2597	1606	991	83	51
140 SX 34/14	2778	1707	1071	92	54



FOR COMMERCIAL TUBE
EXTERNAL DIAMETER: 88,9 mm

n% = Rendimento della pompa
n% = Rendement de la pompe
n% = Pump efficiency
n% = Rendimiento de la bomba

**Max
76%**

kW/st = Assorbimento per stadio
kW/st = Absorption par étage
kW/st = Stage absorption
kW/st = Potencia absorbida por etapa

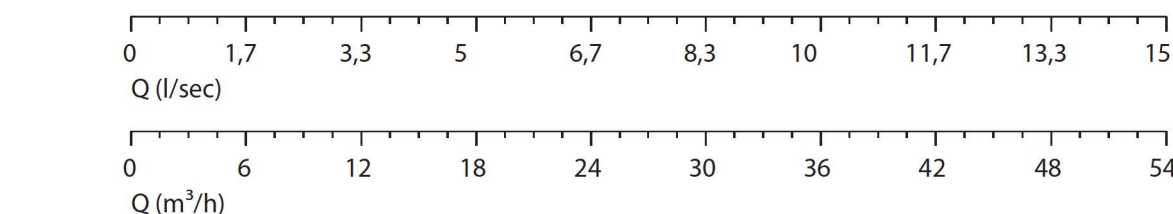
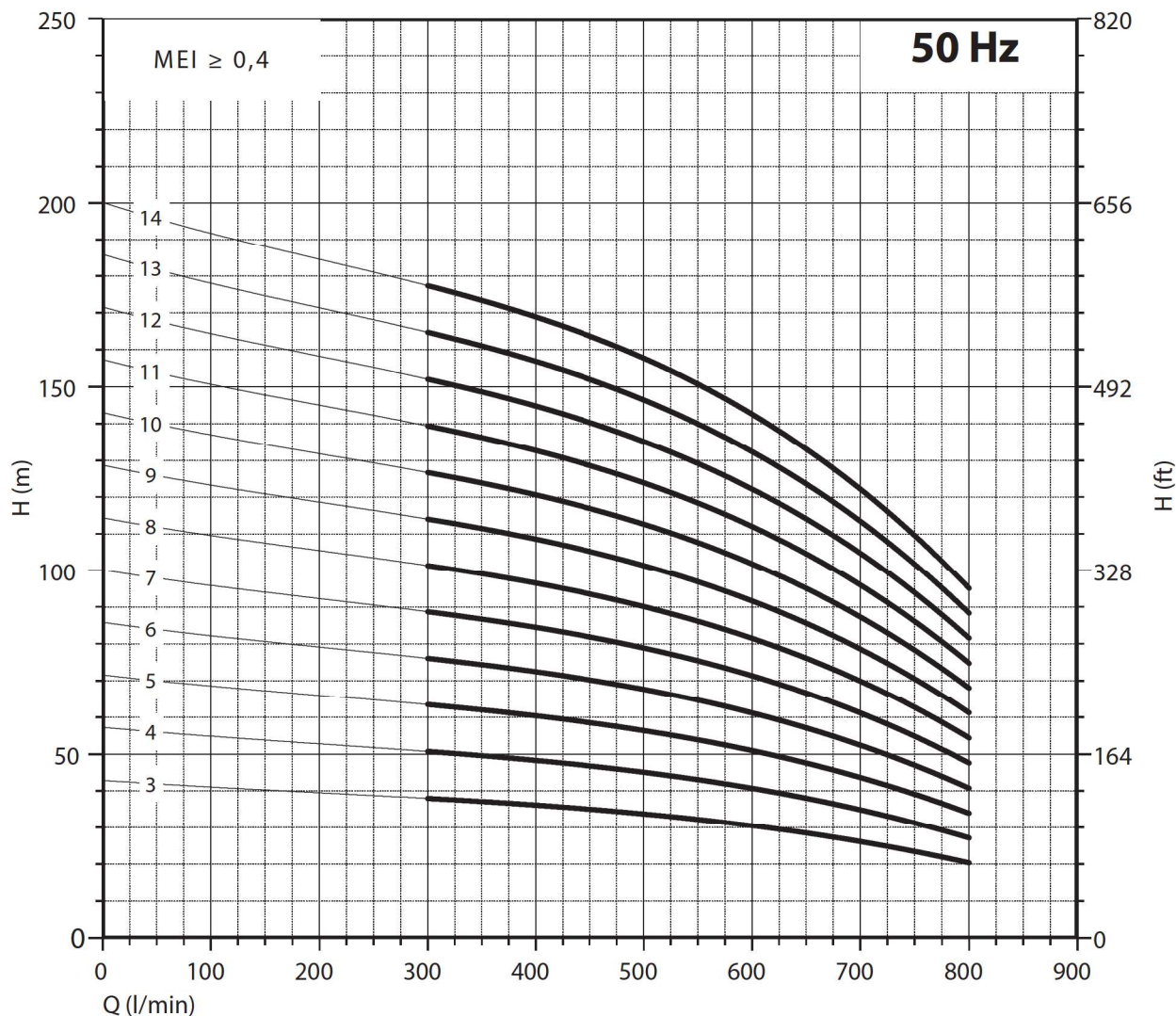
**Max
1,33**

Tolleranza alla sabbia 50 g/m³ - Sand tolerance 50 g/m³ - Compatibilità con acqua potabile DM 174 Drinking water compatibility according to DM 174
Tolleranze secondo UNI ISO 9906 livello 3B - Tolerances according to UNI ISO 9906 grade 3B

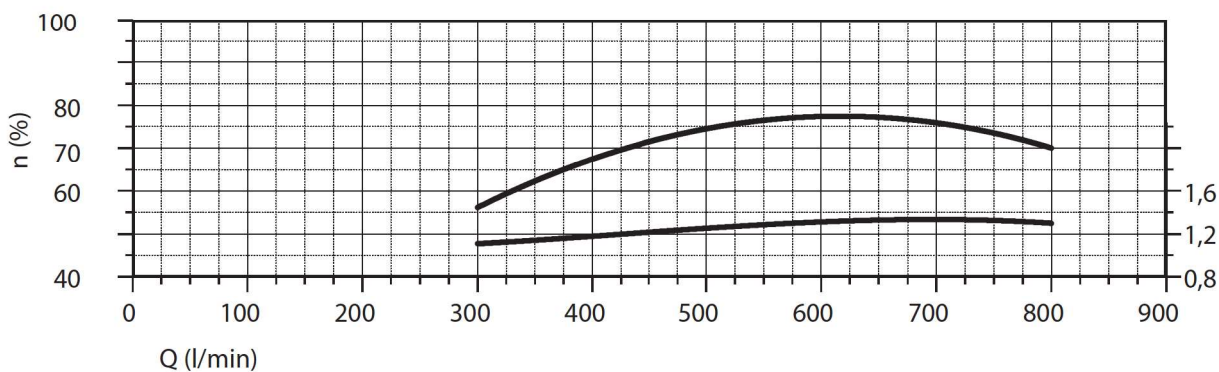


6"

140 SX34



Potenza (kW)



NPSH (m)	25%	50%	75%	100%
140 SX 34	3,4	3,4	3,8	8

6"

140 SX34



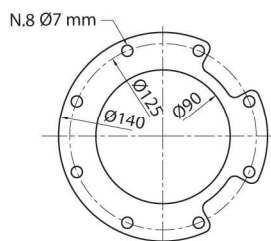
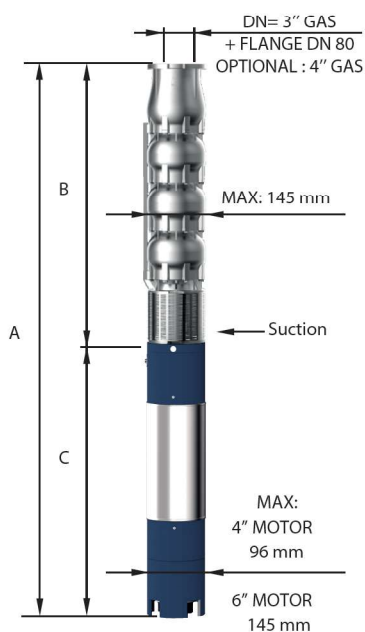
CARATTERISTICHE IDRAULICHE - HYDRAULIC PERFORMANCES

Q= Portata - Capacity - Debit **50 Hz n= 2900 min**

Tipo Type	Power		H(m)	l/min	300	400	500	600	700	800	
	kW	HP		l/sec	0	5	6,67	8,33	10	11,67	13,33
				m ³ /h	0	18	24	30	36	42	48
140 SX 34/15	22	30	H(m)	215	191	180	170	153	131	102	
140 SX 34/16	22	30		229	203	192	181	163	139	109	
140 SX 34/17	26	35		243	216	204	192	173	148	116	
140 SX 34/18	26	35		257	229	216	203	184	157	122	
140 SX 34/19	26	35		272	241	228	215	194	165	129	
140 SX 34/20	30	40		286	254	240	226	204	174	136	
140 SX 34/21	30	40		300	267	252	237	214	183	143	
140 SX 34/22	30	40		315	279	264	249	224	191	150	
140 SX 34/23	37	50		329	292	276	260	235	200	156	
140 SX 34/24	37	50		343	305	288	271	245	209	163	
140 SX 34/25	37	50		358	318	300	283	255	217	170	
140 SX 34/26	37	50		372	330	312	294	265	226	177	
140 SX 34/27	37	50		386	343	324	305	275	235	184	

DIMENSIONI D'INGOMBRO E PESI - OVERALL DIMENSIONS AND WEIGHTS

Type	A mm Tri V 400	B mm	C mm Tri	M Kg Tri	P Kg
140 SX 34/15	2879	1808	1071	92	58
140 SX 34/16	2980	1909	1071	92	61
140 SX 34/17	3191	2010	1181	100	64
140 SX 34/18	3292	2111	1181	100	68
140 SX 34/19	3393	2212	1181	100	71
140 SX 34/20	3564	2313	1251	108	75
140 SX 34/21	3665	2414	1251	108	78
140 SX 34/22	3766	2515	1251	108	82
140 SX 34/23	3957	2616	1341	118	85
140 SX 34/24	4058	2717	1341	118	89
140 SX 34/25	4159	2818	1341	118	92
140 SX 34/26	4260	2919	1341	118	96
140 SX 34/27	4361	3020	1341	118	99



FOR COMMERCIAL TUBE
EXTERNAL DIAMETER: 88,9 mm

n% = Rendimento della pompa
n% = Rendement de la pompe
n% = Pump efficiency
n% = Rendimiento de la bomba

**Max
76%**

kW/st = Assorbimento per stadio
kW/st = Absorption par étage
kW/st = Stage absorption
kW/st = Potencia absorbida por etapa

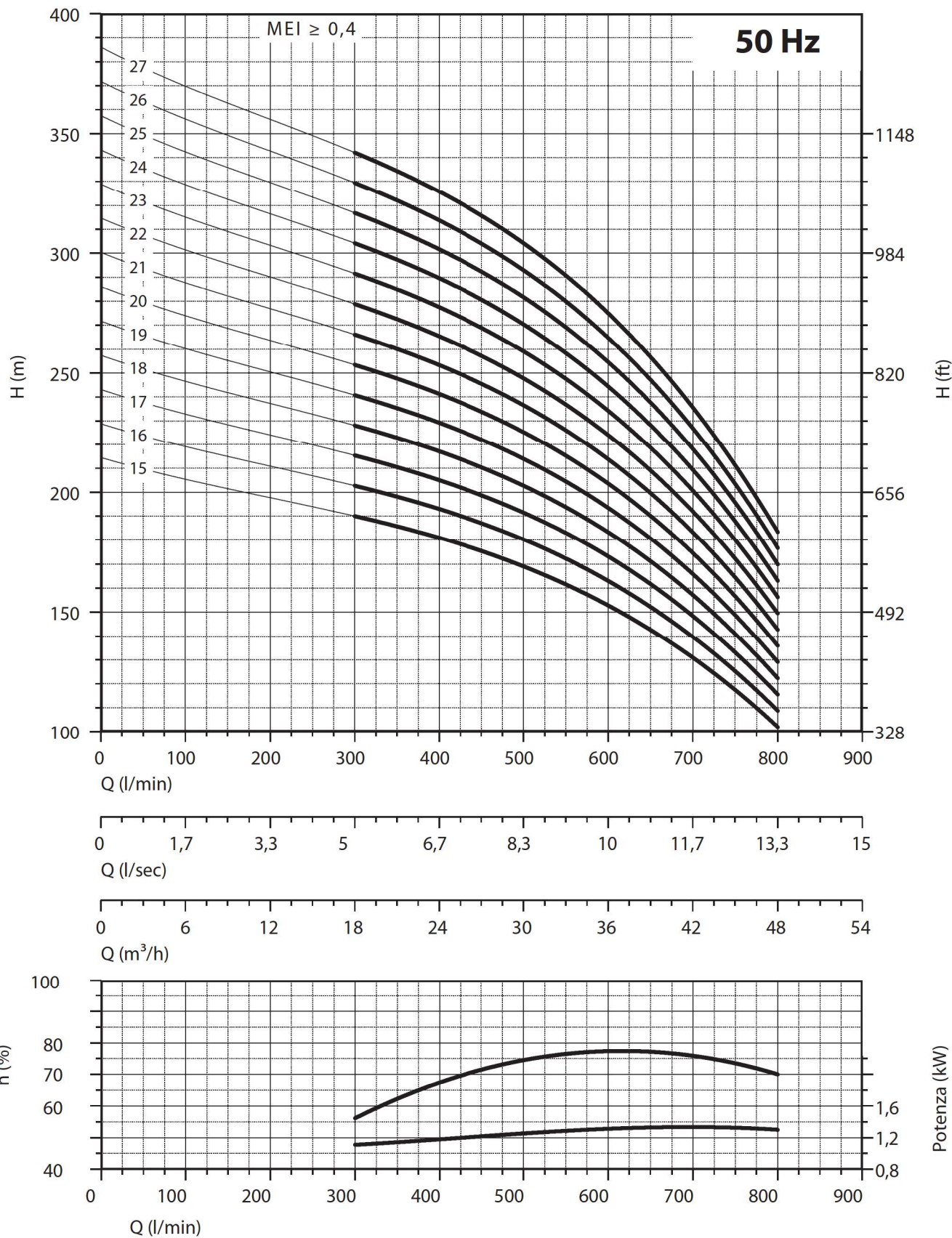
**Max
1,33**

Tolleranza alla sabbia 50 g/m³ - Sand tolerance 50 g/m³ - Compatibilità con acqua potabile DM 174 Drinking water compatibility according to DM 174
Tolleranze secondo UNI ISO 9906 livello 3B - Tolerances according to UNI ISO 9906 grade 3B



6"

140 SX34



NPSH (m)	25%	50%	75%	100%
140 SX 34	3,4	3,4	3,8	8