

# 6"

## 140 SX44



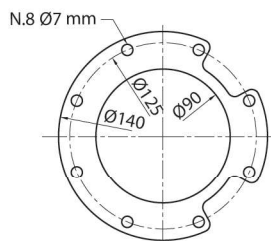
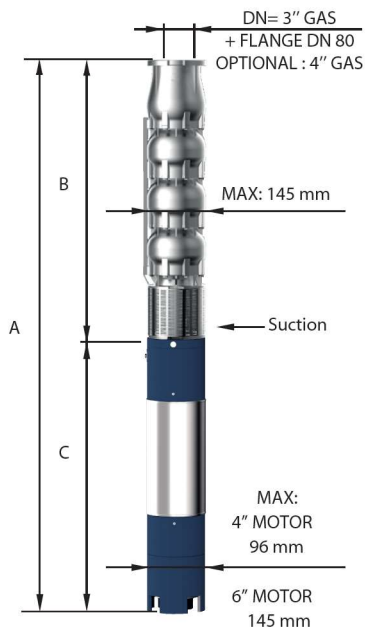
### CARATTERISTICHE IDRAULICHE - HYDRAULIC PERFORMANCES

Q= Portata - Capacity - Debit **50 Hz n= 2900 min**

Tipo Type	Power		H(m)	0	400	500	600	700	800	900	1000	
	kW	HP		l/min	l/sec	m <sup>3</sup> /h	l/min	l/sec	m <sup>3</sup> /h	l/min	l/sec	m <sup>3</sup> /h
				0	6,67	8,33	10	11,67	13,33	15	16,67	
140 SX 44/04	5,50	7,5	56	46	44	42	39	35	30	26		
140 SX 44/05	7,50	10	70	57	56	53	49	44	37	32		
140 SX 44/06	9,20	12,5	84	68	67	64	59	53	44	38		
140 SX 44/07	11	15	98	80	78	74	69	62	52	45		
140 SX 44/08	13	17,5	112	91	89	85	78	70	59	51		
140 SX 44/09	13	17,5	126	103	100	95	88	79	67	58		
140 SX 44/10	15	20	140	114	111	106	98	88	74	64		
140 SX 44/11	18,50	25	154	125	122	117	108	97	81	70		
140 SX 44/12	18,50	25	168	137	133	127	118	106	89	77		
140 SX 44/13	22	30	182	148	144	138	127	114	96	83		
140 SX 44/14	22	30	196	160	155	283	137	123	104	90		

### DIMENSIONI D'INGOMBRO E PESI - OVERALL DIMENSIONS AND WEIGHTS

Type	A mm Tri V 400	B mm	C mm Tri	M Kg Tri	P Kg
140 SX 44/04	1395	697	698	27	20
140 SX 44/05	1616	798	818	32	23
140 SX 44/06	1650	899	751	60	27
140 SX 44/07	1811	1000	811	65	30
140 SX 44/08	1942	1101	841	70	33
140 SX 44/09	2043	1202	841	70	37
140 SX 44/10	2234	1303	931	75	40
140 SX 44/11	2395	1404	991	83	44
140 SX 44/12	2496	1505	991	83	47
140 SX 44/13	2677	1606	1071	92	51
140 SX 44/14	2778	1707	1071	92	54



FOR COMMERCIAL TUBE  
EXTERNAL DIAMETER: 88,9 mm

n% = Rendimento della pompa  
n% = Rendement de la pompe  
n% = Pump efficiency  
n% = Rendimiento de la bomba

**Max  
78,5%**

kW/st = Assorbimento per stadio  
kW/st = Absorption par étage  
kW/st = Stage absorption  
kW/st = Potencia absorbida por etapa

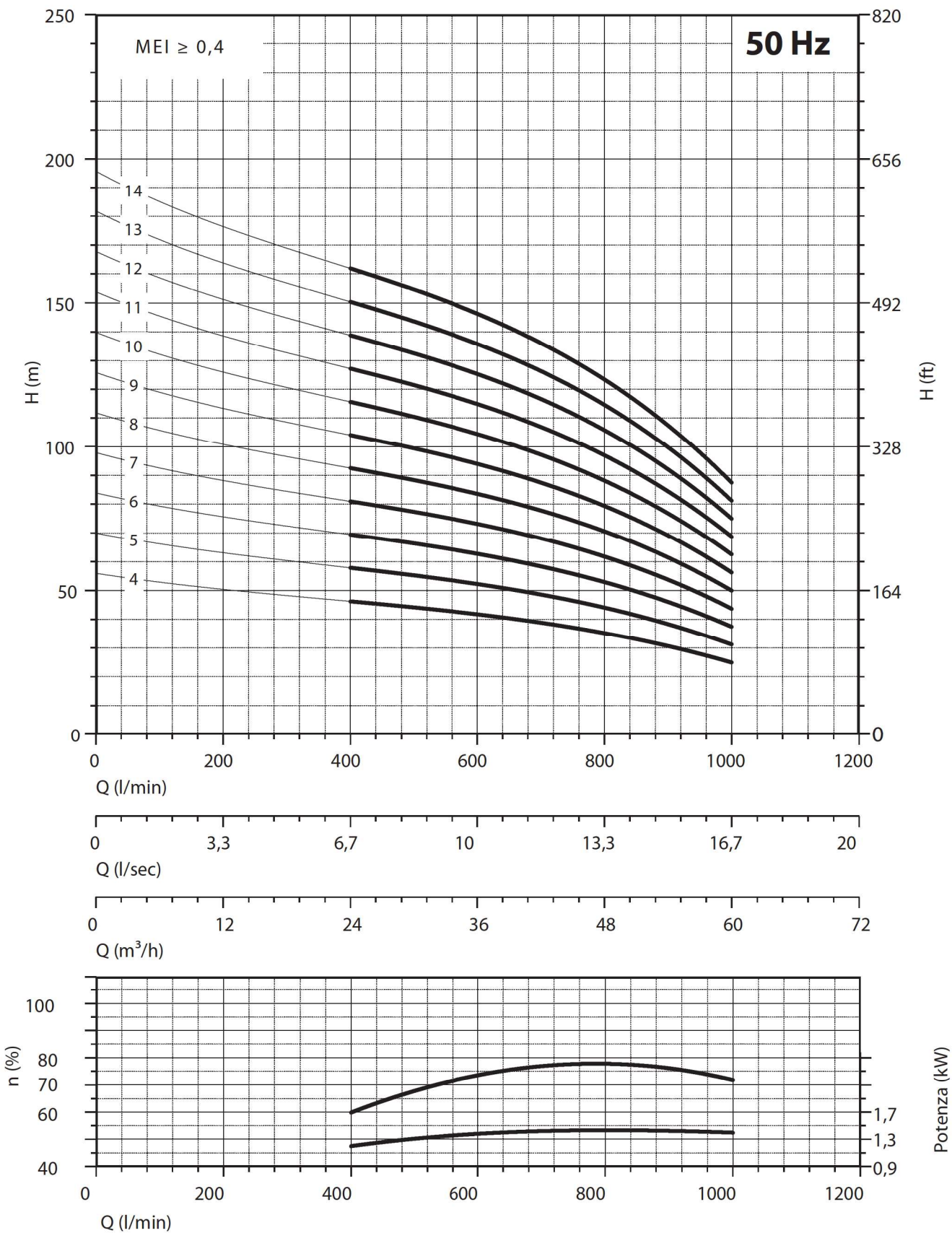
**Max  
1,44**

Tolleranza alla sabbia 50 g/m<sup>3</sup> - Sand tolerance 50 g/m<sup>3</sup> - Compatibilità con acqua potabile DM 174 Drinking water compatibility according to DM 174  
Tolleranze secondo UNI ISO 9906 livello 3B - Tolerances according to UNI ISO 9906 grade 3B



# 6"

## 140 SX44



NPSH (m)	25%	50%	75%	100%
140 SX 44	3,45	3,5	3,8	5

# 6"

## 140 SX44



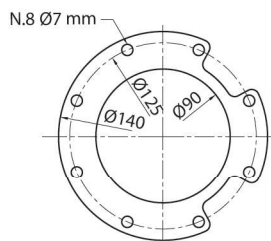
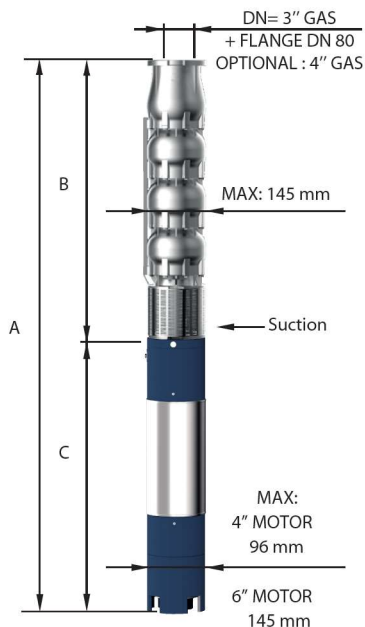
### CARATTERISTICHE IDRAULICHE - HYDRAULIC PERFORMANCES

Q= Portata - Capacity - Debit **50 Hz n= 2900 min**

Tipo Type	Power		H(m)	0	400	500	600	700	800	900	1000	
	kW	HP		l/min	l/sec	m <sup>3</sup> /h	l/min	l/sec	m <sup>3</sup> /h	l/min	l/sec	m <sup>3</sup> /h
				0	6,67	8,33	10	11,67	13,33	15	16,67	
140 SX 44/15	22	30	210	171	167	159	147	132	111	96		
140 SX 44/16	26	35	224	182	178	170	157	141	118	102		
140 SX 44/17	26	35	238	194	189	180	167	150	126	109		
140 SX 44/18	26	35	252	205	200	191	176	158	133	115		
140 SX 44/19	30	40	266	217	211	201	186	167	141	122		
140 SX 44/20	30	40	280	228	222	212	196	176	148	128		
140 SX 44/21	37	50	294	239	233	223	206	185	155	134		
140 SX 44/22	37	50	308	251	244	233	216	194	163	141		
140 SX 44/23	37	50	322	262	255	244	225	202	170	147		
140 SX 44/24	37	50	336	274	266	254	235	211	178	154		
140 SX 44/25	37	50	350	285	278	265	245	220	185	160		

### DIMENSIONI D'INGOMBRO E PESI - OVERALL DIMENSIONS AND WEIGHTS

Type	A mm Tri V 400	B mm	C mm Tri	M Kg Tri	P Kg
140 SX 44/15	2879	1808	1071	92	58
140 SX 44/16	3090	1909	1181	100	61
140 SX 44/17	3191	2010	1181	100	64
140 SX 44/18	3362	2111	1251	108	68
140 SX 44/19	3463	2212	1251	108	71
140 SX 44/20	3654	2313	1341	118	75
140 SX 44/21	3755	2414	1341	118	78
140 SX 44/22	3856	2515	1341	118	82
140 SX 44/23	3957	2616	1341	118	85
140 SX 44/24	4058	2717	1341	118	89
140 SX 44/25	4159	2818	1341	118	92



FOR COMMERCIAL TUBE  
EXTERNAL DIAMETER: 88,9 mm

n% = Rendimento della pompa  
n% = Rendement de la pompe  
n% = Pump efficiency  
n% = Rendimiento de la bomba

**Max  
78,5%**

kW/st = Assorbimento per stadio  
kW/st = Absorption par étage  
kW/st = Stage absorption  
kW/st = Potencia absorbida por etapa

**Max  
1,44**

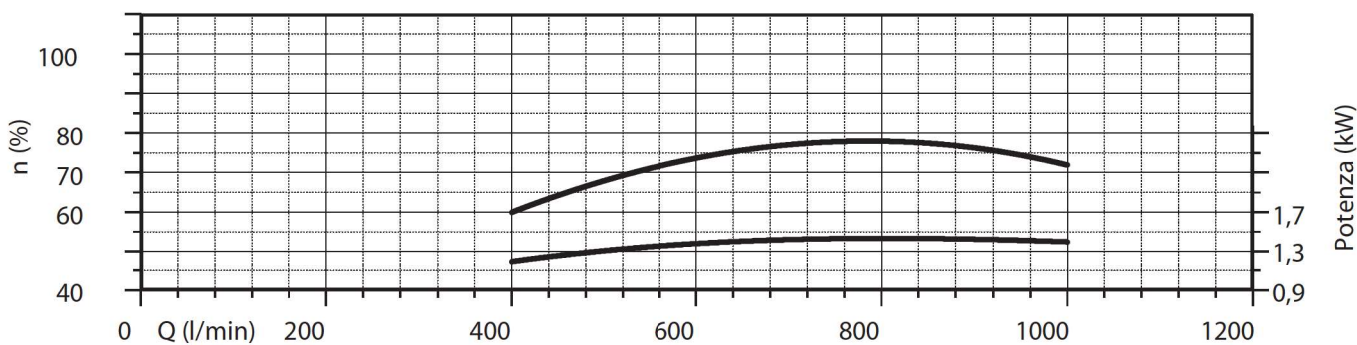
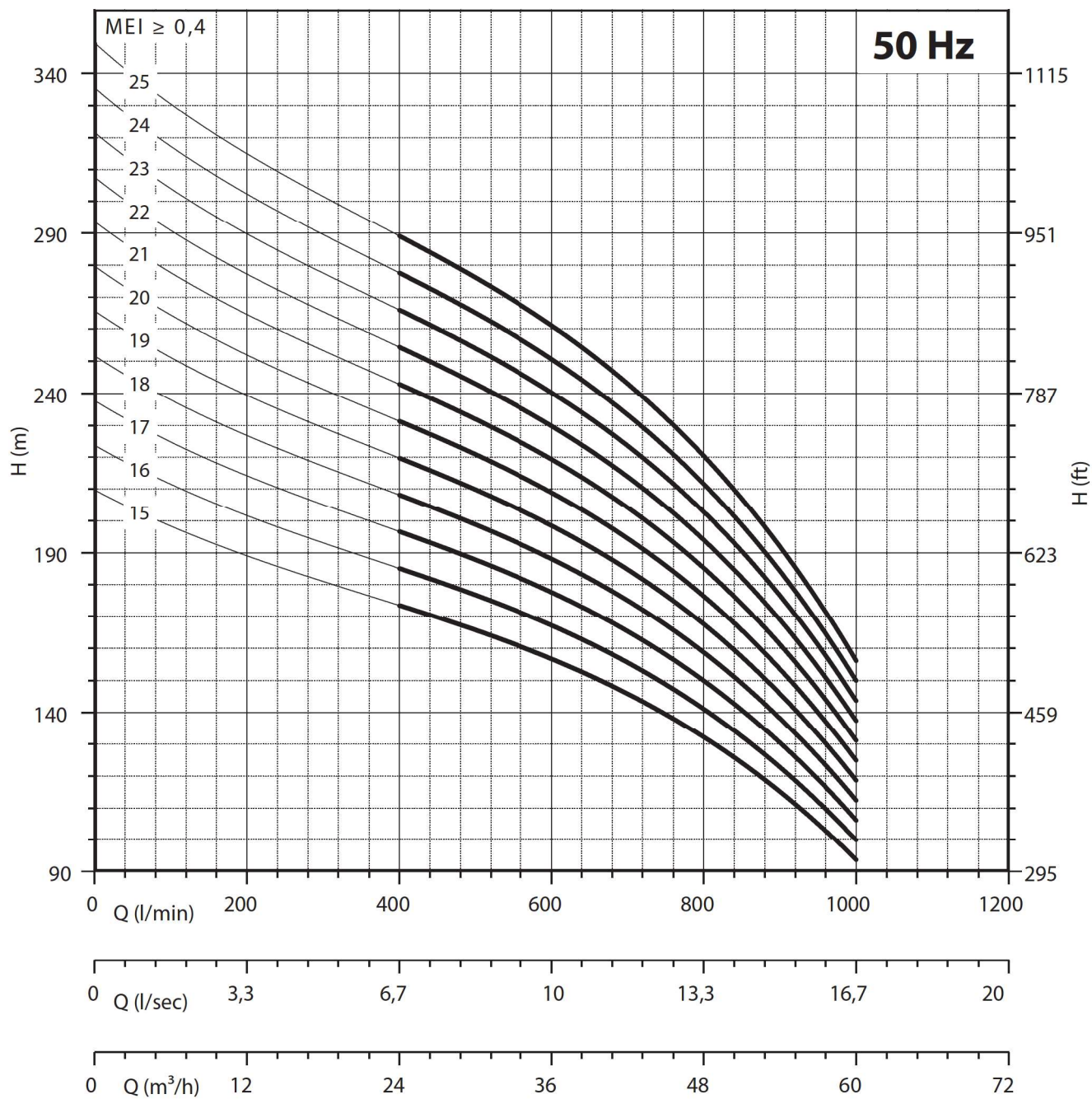
Tolleranza alla sabbia 50 g/m<sup>3</sup> - Sand tolerance 50 g/m<sup>3</sup> - Compatibilità con acqua potabile DM 174 Drinking water compatibility according to DM 174  
Tolleranze secondo UNI ISO 9906 livello 3B - Tolerances according to UNI ISO 9906 grade 3B





# 6"

## 140 SX44



NPSH (m)	25%	50%	75%	100%
140 SX 44	3,45	3,5	3,8	5