

6"

140 SX54



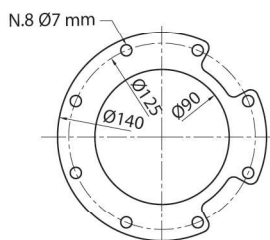
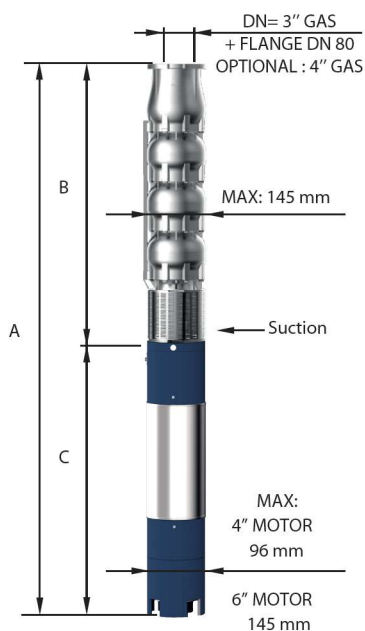
CARATTERISTICHE IDRAULICHE - HYDRAULIC PERFORMANCES

Q= Portata - Capacity - Debit **50 Hz n= 2900 min**

Tipo Type	Power		H(m)	0	600	700	800	900	1000	1100	1200	
	kW	HP		l/min	l/sec	m ³ /h	l/min	l/sec	m ³ /h	l/min	l/sec	m ³ /h
				0	10	11,67	13,33	15	16,67	18,33	20	
140 SX 54/03	5,50	7,5	41	31	29	27	26	23	21	18		
140 SX 54/04	7,50	10	55	41	38	36	34	31	28	24		
140 SX 54/05	9,20	12,5	69	52	48	46	43	39	35	30		
140 SX 54/06	11	15	82	62	58	55	51	47	41	36		
140 SX 54/07	13	17,5	96	72	67	64	60	55	48	42		
140 SX 54/08	13	17,5	110	82	77	73	68	62	55	48		
140 SX 54/09	15	20	123	93	86	82	77	70	62	54		
140 SX 54/10	18,50	25	137	103	96	91	85	78	69	60		
140 SX 54/11	18,50	25	151	113	106	100	94	86	76	66		
140 SX 54/12	22	30	164	124	115	109	102	94	83	72		

DIMENSIONI D'INGOMBRO E PESI - OVERALL DIMENSIONS AND WEIGHTS

Type	A mm Tri V 400	B mm	C mm Tri	M Kg Tri	P Kg
140 SX 54/03	1312	614	698	27	19
140 SX 54/04	1539	721	818	32	22
140 SX 54/05	1579	828	751	60	26
140 SX 54/06	1746	935	811	65	29
140 SX 54/07	1883	1042	841	70	32
140 SX 54/08	1990	1149	841	70	35
140 SX 54/09	2187	1256	931	75	38
140 SX 54/10	2354	1363	991	83	41
140 SX 54/11	2461	1470	991	83	45
140 SX 54/12	2648	1577	1071	92	49



FOR COMMERCIAL TUBE
EXTERNAL DIAMETER: 88,9 mm

n% = Rendimento della pompa
n% = Rendement de la pompe
n% = Pump efficiency
n% = Rendimiento de la bomba

**Max
77%**

kW/st = Assorbimento per stadio
kW/st = Absorption par étage
kW/st = Stage absorption
kW/st = Potencia absorbida por etapa

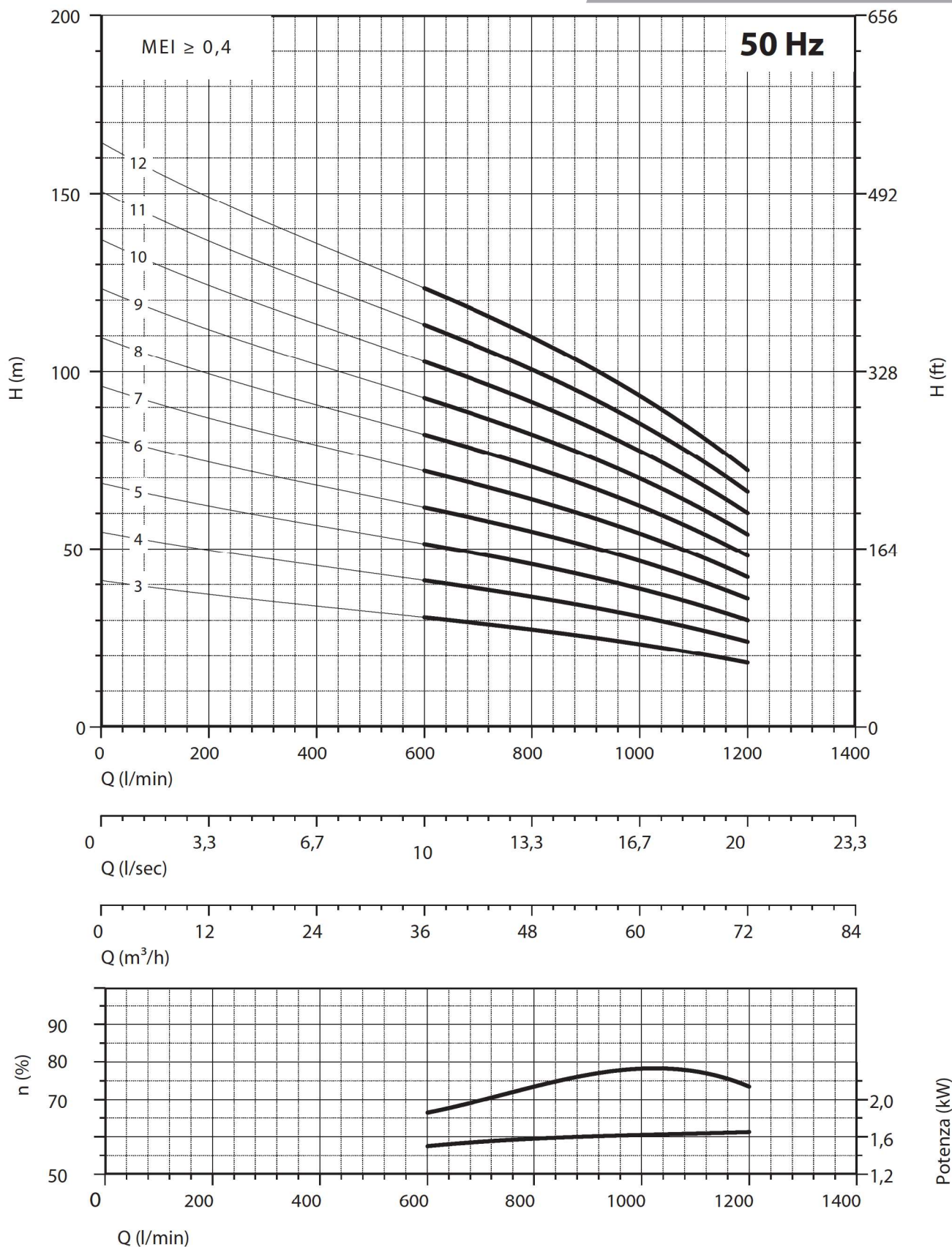
**Max
1,65**

Tolleranza alla sabbia 50 g/m³ - Sand tolerance 50 g/m³ - Compatibilità con acqua potabile DM 174 Drinking water compatibility according to DM 174
Tolleranze secondo UNI ISO 9906 livello 3B - Tolerances according to UNI ISO 9906 grade 3B



6"

140 SX54



NPSH (m)	25%	50%	75%	100%
140 SX 54	3,8	3,8	5,1	7,1

6"

140 SX54



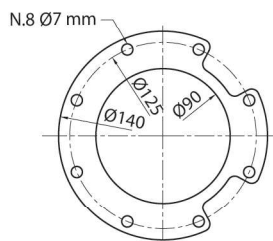
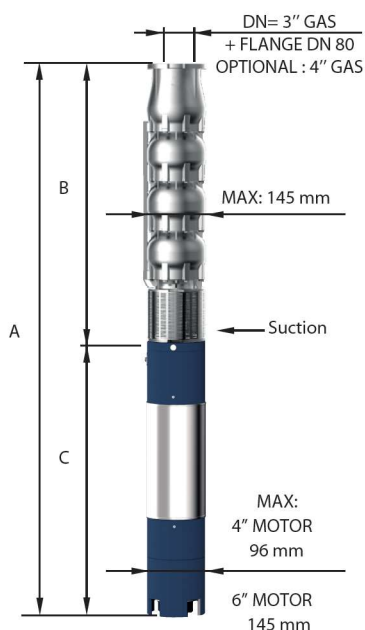
CARATTERISTICHE IDRAULICHE - HYDRAULIC PERFORMANCES

Q= Portata - Capacity - Debit **50 Hz n= 2900 min**

Tipo Type	Power		H(m)	0	600	700	800	900	1000	1100	1200	
	kW	HP		l/min	l/sec	m ³ /h	l/min	l/sec	m ³ /h	l/min	l/sec	m ³ /h
				0	10	11,67	13,33	15	16,67	18,33	20	
140 SX 54/13	22	30	178	134	125	118	111	101	90	78		
140 SX 54/14	26	35	192	144	134	127	119	109	97	84		
140 SX 54/15	26	35	206	155	144	137	128	117	104	90		
140 SX 54/16	26	35	219	165	154	146	136	125	110	96		
140 SX 54/17	30	40	233	175	163	155	145	133	117	102		
140 SX 54/18	30	40	247	185	173	164	153	140	124	108		
140 SX 54/19	37	50	260	196	182	173	162	148	131	114		
140 SX 54/20	37	50	274	206	192	182	170	156	138	120		
140 SX 54/21	37	50	288	216	202	191	179	164	145	126		
140 SX 54/22	37	50	301	227	211	200	187	172	152	132		

DIMENSIONI D'INGOMBRO E PESI - OVERALL DIMENSIONS AND WEIGHTS

Type	A mm Tri V 400	B mm	C mm Tri	M Kg Tri	P Kg
140 SX 54/13	2755	1684	1071	92	53
140 SX 54/14	2972	1791	1181	100	56
140 SX 54/15	3079	1898	1181	100	59
140 SX 54/16	3186	2005	1181	100	61
140 SX 54/17	3363	2112	1251	108	64
140 SX 54/18	3470	2219	1251	108	67
140 SX 54/19	3667	2326	1341	118	70
140 SX 54/20	3774	2433	1341	118	74
140 SX 54/21	3881	2540	1341	118	77
140 SX 54/22	3988	2647	1341	118	82



FOR COMMERCIAL TUBE
EXTERNAL DIAMETER: 88,9 mm

n% = Rendimento della pompa
n% = Rendement de la pompe
n% = Pump efficiency
n% = Rendimiento de la bomba

**Max
77%**

kW/st = Assorbimento per stadio
kW/st = Absorption par étage
kW/st = Stage absorption
kW/st = Potencia absorbida por etapa

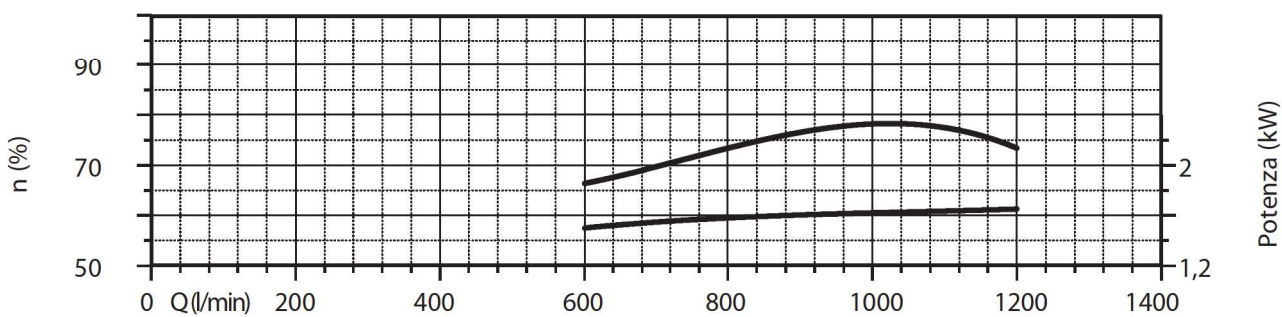
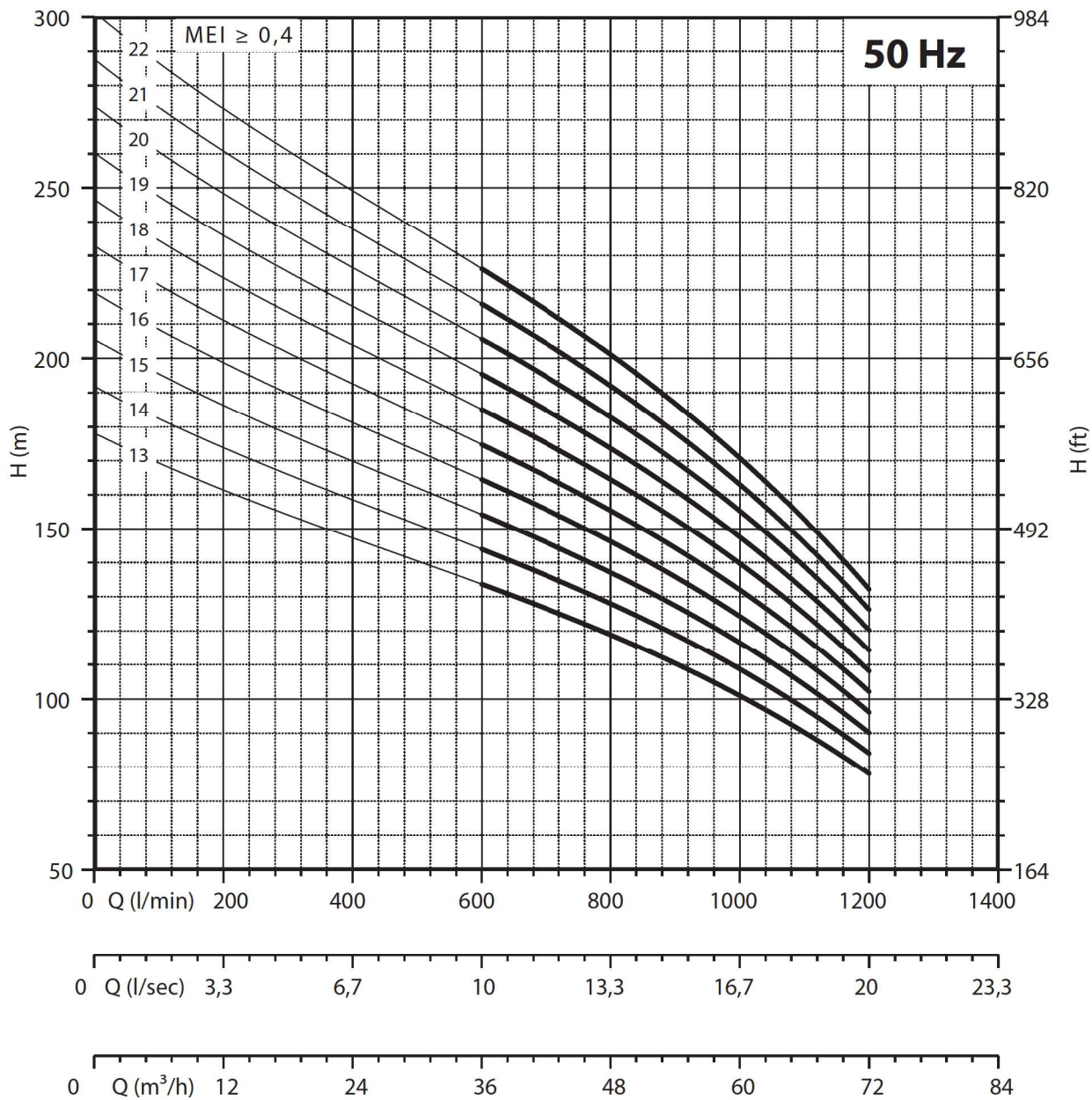
**Max
1,65**

Tolleranza alla sabbia 50 g/m³ - Sand tolerance 50 g/m³ - Compatibilità con acqua potabile DM 174 Drinking water compatibility according to DM 174
Tolleranze secondo UNI ISO 9906 livello 3B - Tolerances according to UNI ISO 9906 grade 3B



6"

140 SX54



NPSH (m)	25%	50%	75%	100%
140 SX 54	3,8	3,8	7,1	5,1